

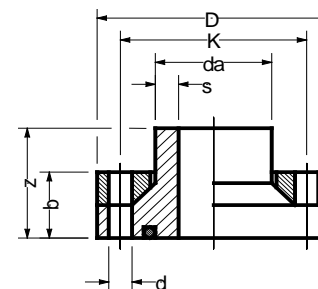
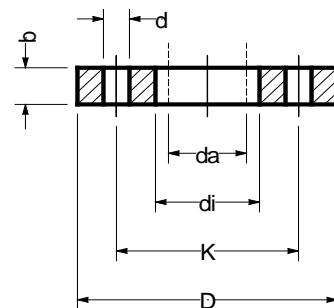
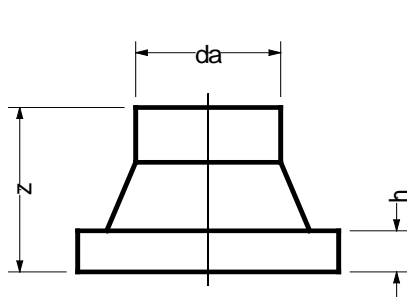
## Flanger til PE rørsystemer

### STANDARD = krave + flange

| DN  | Ø (udv.) | k-mm | PN    | SDR 17<br>lysning | SDR 11<br>lysning |
|-----|----------|------|-------|-------------------|-------------------|
| 20  | 25       | 75   | 10/16 | -                 | 20,40             |
| 25  | 32       | 85   | 10/16 | -                 | 26,00             |
| 32  | 40       | 100  | 10/16 | -                 | 32,60             |
| 40  | 50       | 110  | 10/16 | -                 | 40,80             |
| 50  | 63       | 125  | 10/16 | -                 | 51,40             |
| 65  | 75       | 145  | 10/16 | 66,00             | 61,40             |
| 80  | 90       | 160  | 10/16 | 79,20             | 73,60             |
| 100 | 110      | 180  | 10/16 | 96,80             | 90,00             |
| 100 | 125      | 180  | 10/16 | 110,20            | 102,20            |
| 125 | 140      | 210  | 10/16 | 123,40            | 114,60            |
| 150 | 160      | 240  | 10/16 | 141,00            | 145,40            |
| 150 | 180      | 240  | 10/16 | 158,60            | 147,20            |
| 200 | 200      | 295  | 10    | 176,20            | 163,60            |
| 200 | 225      | 295  | 10    | 198,20            | 184,00            |
| 250 | 250      | 350  | 10    | 220,40            | 204,60            |
| 250 | 280      | 350  | 10    | 246,40            | 229,40            |
| 300 | 315      | 400  | 10    | 277,60            | 257,80            |
| 350 | 355      | 460  | 10    | 312,80            | 290,60            |
| 400 | 400      | 515  | 10    | 352,60            | 327,40            |
| 500 | 450      | 620  | 10    | 396,60            | 368,20            |
| 500 | 500      | 620  | 10    | 396,60            | 368,20            |

### SLIM = komplet enhed

| DN  | Ø (udv.) | k-mm | PN | SDR 17<br>lysning | SDR 11<br>lysning |
|-----|----------|------|----|-------------------|-------------------|
| 65  | 90       | 145  | 10 | 79,20             | 73,60             |
| 80  | 110      | 160  | 10 | 96,80             | 90,00             |
| 100 | 140      | 180  | 10 | 123,40            | 114,60            |
| 125 | 160      | 210  | 10 | 141,00            | 145,40            |
| 125 | 180      | 210  | 10 | 158,60            | 147,20            |
| 150 | 200      | 240  | 10 | 176,20            | 163,60            |
| 200 | 250      | 295  | 10 | 220,40            | 204,60            |
| 250 | 315      | 350  | 10 | 277,60            | 257,80            |
| 300 | 355      | 400  | 10 | 312,80            | 290,60            |
| 350 | 400      | 460  | 10 | 352,60            | 327,40            |
| 400 | 450      | 515  | 10 | 396,60            | 368,20            |
| 500 | 560      | 620  | 10 | 505,00            | 458,20            |
| 500 | 630      | 620  | 10 | 505,00            | 458,20            |



SLIM flange:  
PE / Galvaniseret stål  
med O-ringspakning